

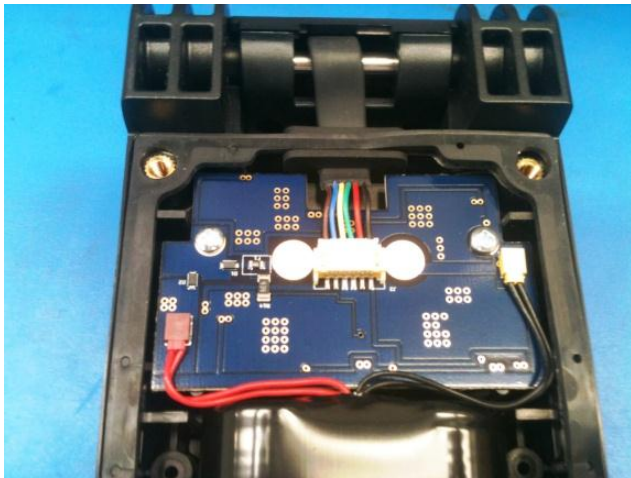
9410 Light – Replacing the battery

- Use of anti static equipment is highly recommended.



Step 1

Remove bottom cover – 6 screws



Step 2

Disconnect battery cables, remove battery.



Step 3

Place the new battery to his position and connect cables, - connectors have to slide together properly. Place the cables neatly to the sides of the PCB.



Step 4 Make sure the rubber seal sits correctly all around the mating surface, and position bottom part until all screws comes to place.

Tie down fasteners.

Place the light on the charger, and make sure charging starts. (Red blinking light on the charger)

Battery charge indication on the light switch will be red in the beginning. (even if charger indicates full charge leave the light on the charger for at least 6 h.

After 6 h charge both the charger and the light should be on green status.

Check the light functions, - high , low , blinking and mode; - if everything works correctly light is ready to be released to the customer.